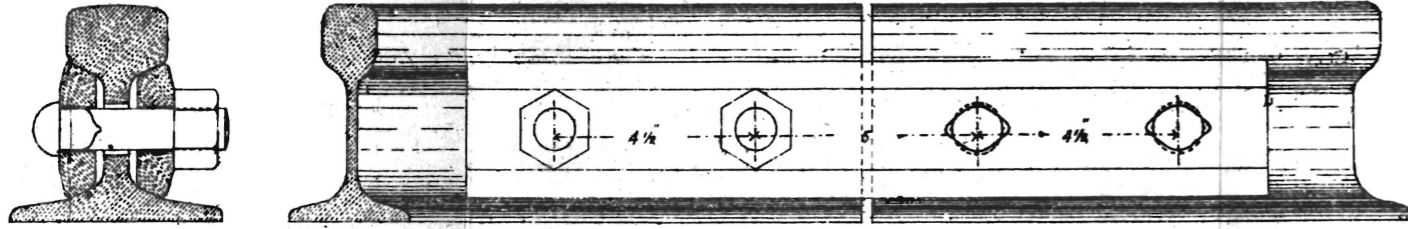


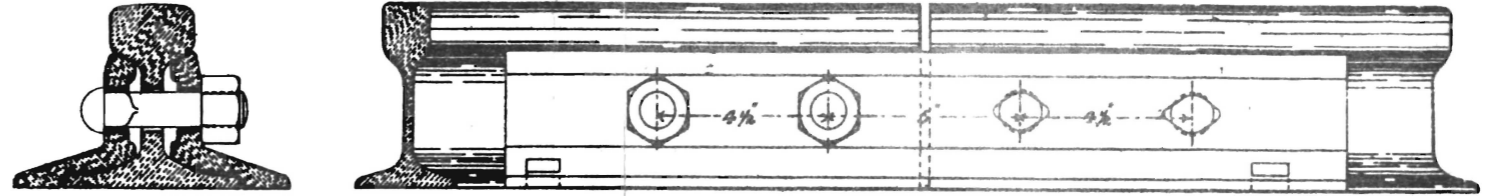
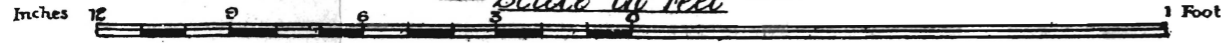
A

THE MODERN TENDENCY OF RAILWAY PRACTICE.

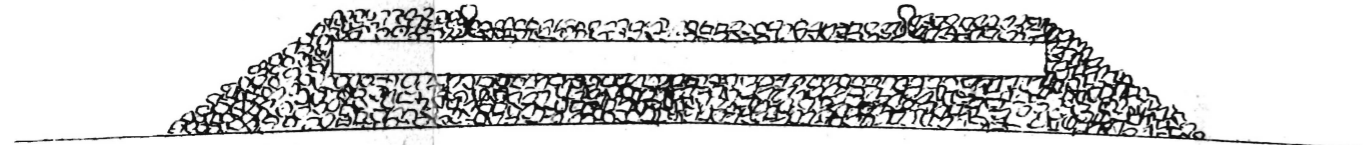
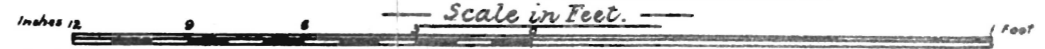
B



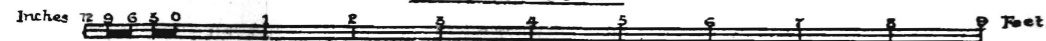
— 70 LB RAIL WITH ORDINARY FISH PLATE —
— Scale in Feet —



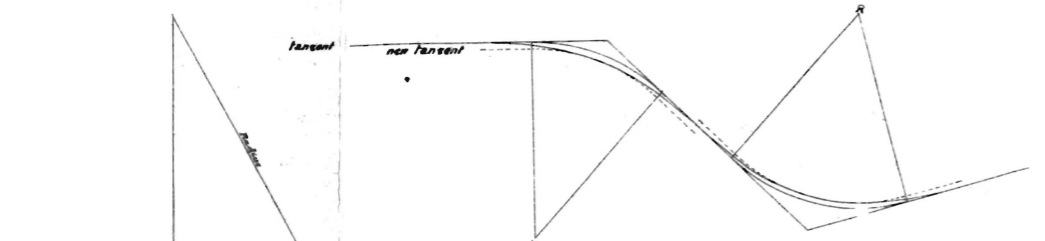
— 70 LB RAIL WITH ANGLE FISH-PLATE. —



— CROSS SECTION —
— Scale in Feet —



Sketch showing Application of transition curve.



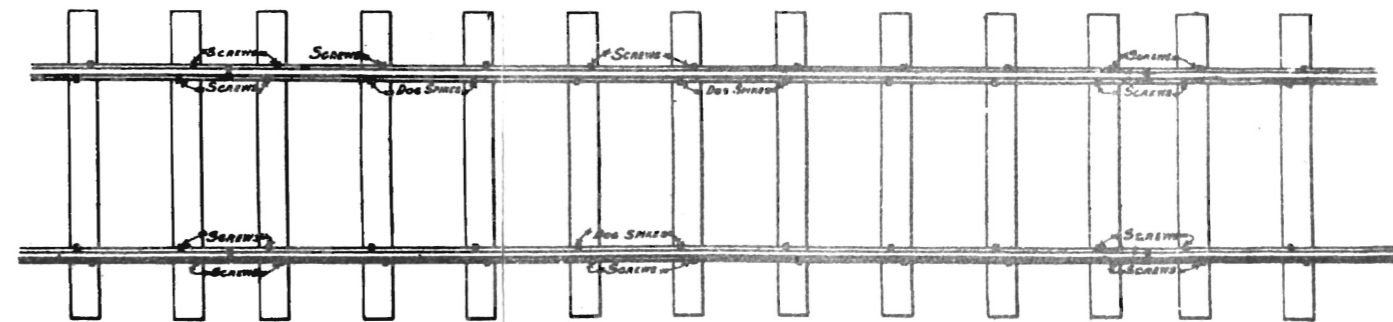
If radius = 2 chains
BE = 16.5 inches BF = 8.25 inches
Where AB = BC = 1 chain
DG = 49.5 inches
DC = 66

AB = BC
BE = 1/2 DC = 33
BF = FE

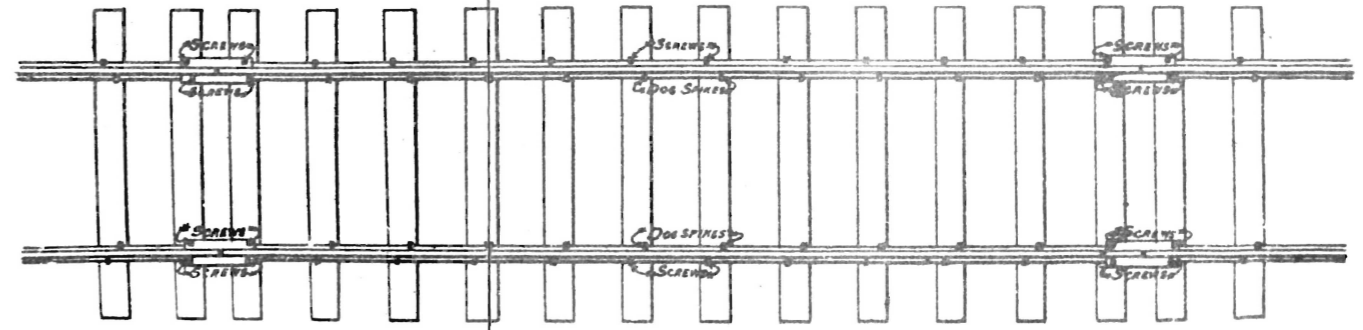
— Enlarged view of junction between straight and curve. —

NOTE. The diagrams are drawn to a distorted scale the distance between original and new tangents being too small to show to natural scale unless diagrams were drawn to very much larger scale

WJ
11/17



— PRESENT PLAN OF PERMANENT WAY. —



— PROPOSED PLAN OF PERMANENT WAY. —

