

ELECTRIC LIGHTING OF SYDNEY AND SUBURBS.

Plate XVII.

1891-92. **LOAD DIACRAM - AUSTRALIA HOTEL.** 110 Volts.

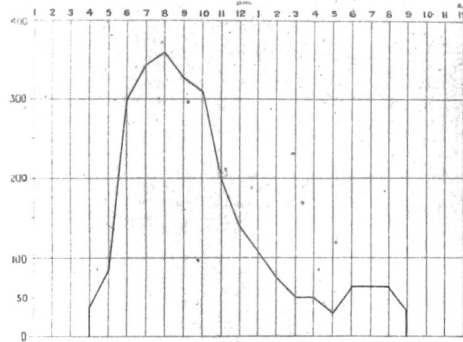


Fig. 1.

LOAD DIACRAM.
TALLOOMA-EDGECLIFFE ROAD.

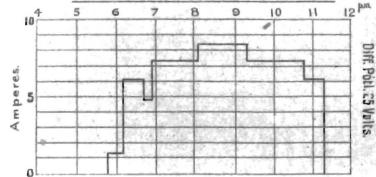


Fig. 2.

THREE PHASE SYSTEM.

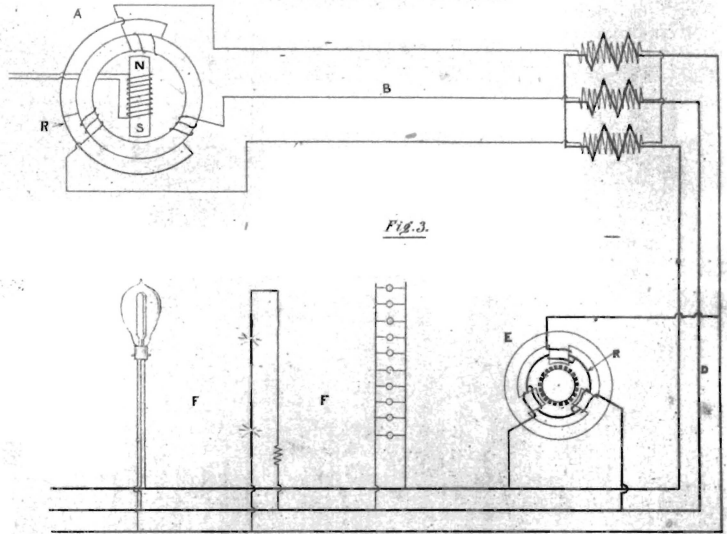


Fig. 3.