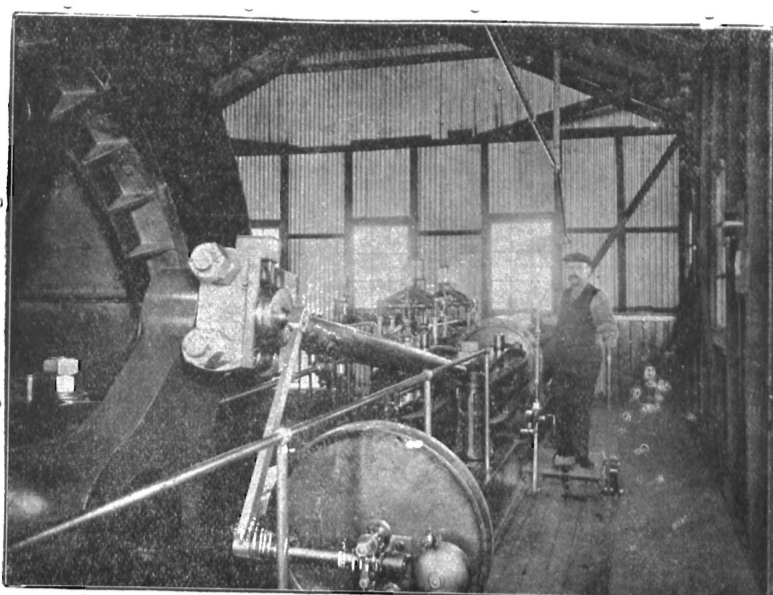
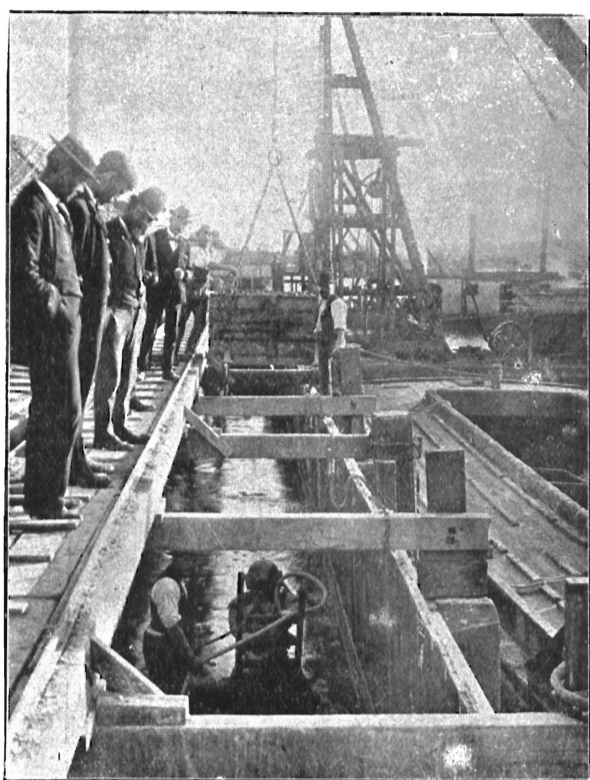


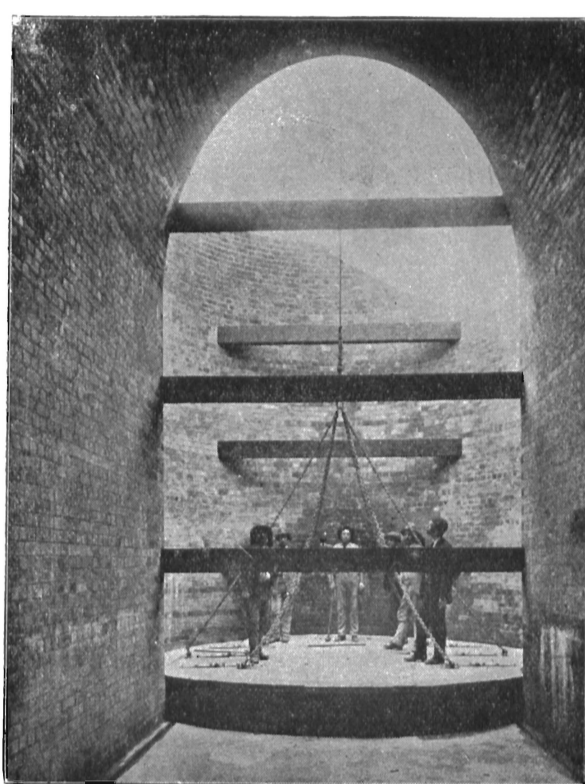
Construction of Quay Wall.



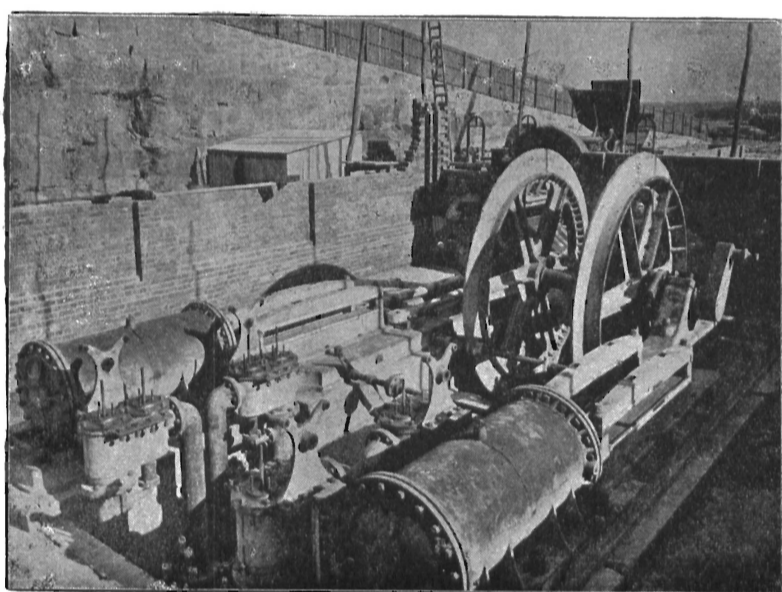
Birthday Shaft Sinking Engines.



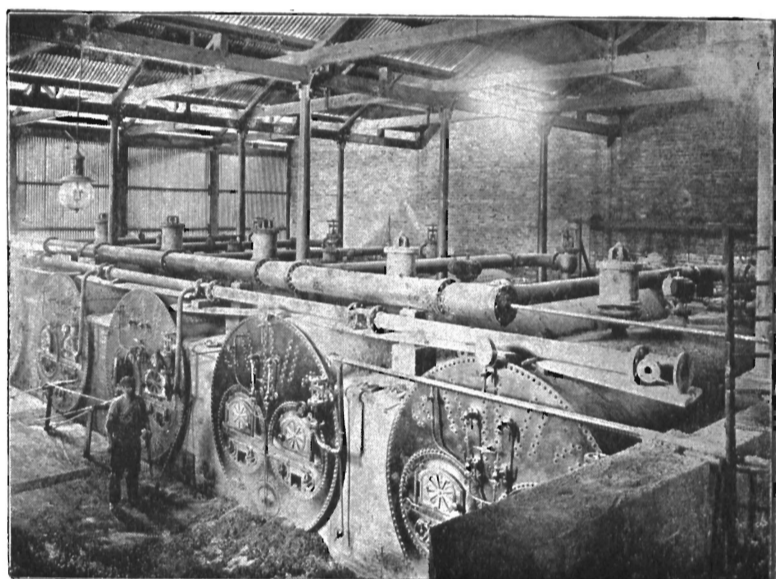
Quay Wall Cofferdam



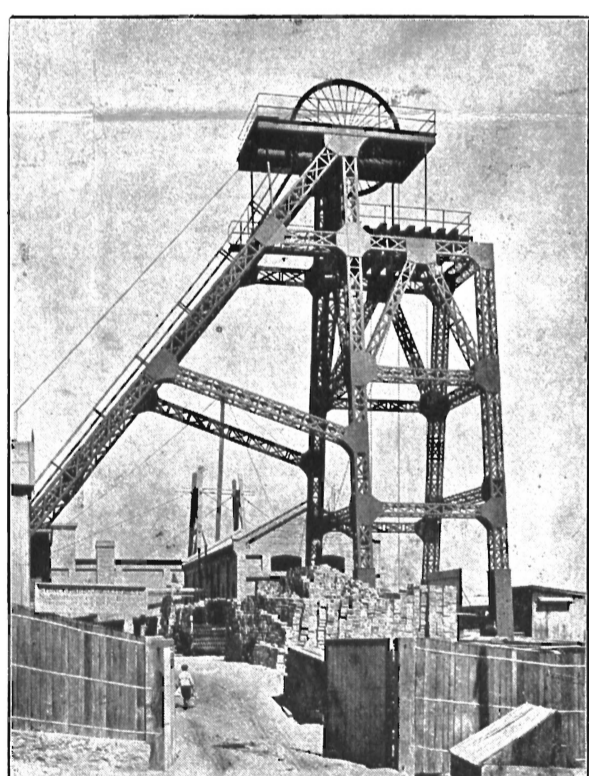
Main Air Drift from Jubilee Shaft to Fan.



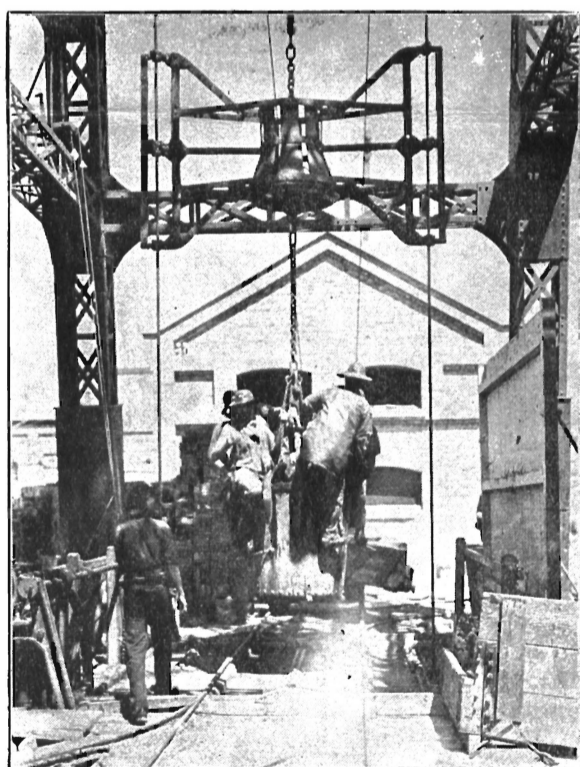
Jubilee Shaft Winding Engines during Erection.



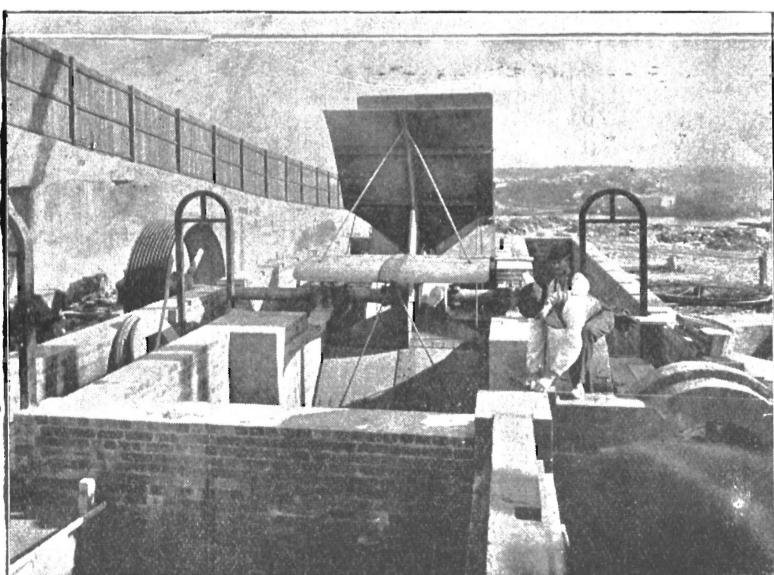
Interior of Boiler House.



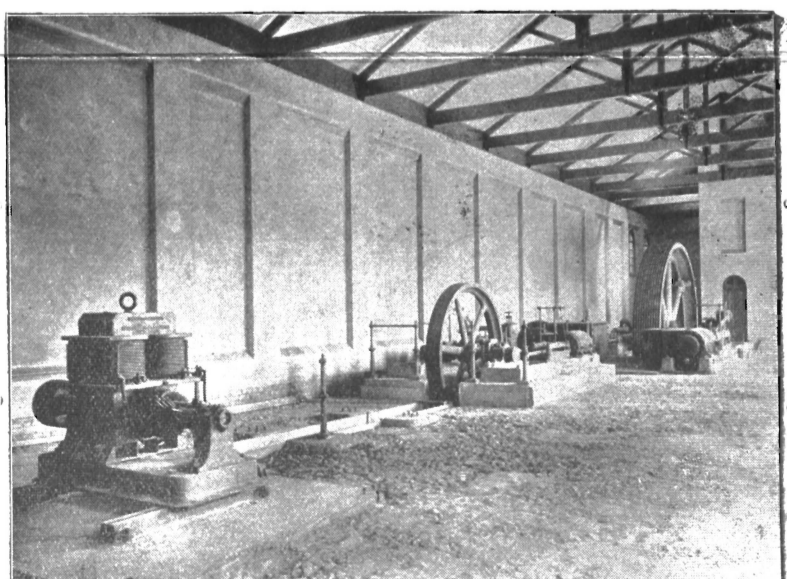
Steel Head-gear at Birthday Shaft.



View of Birthday Shaft, showing Guide Ropes and Runners.



Ventilating Fan during Erection.



Interior of Fan Engine House during Erection, showing also Electric Lighting Plant.