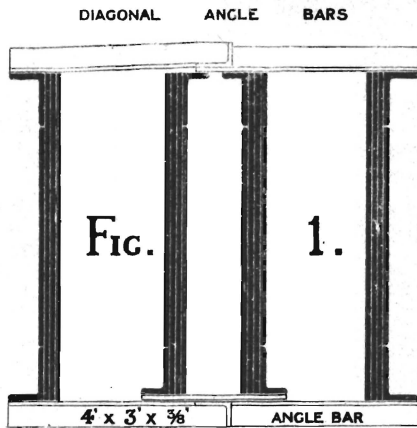


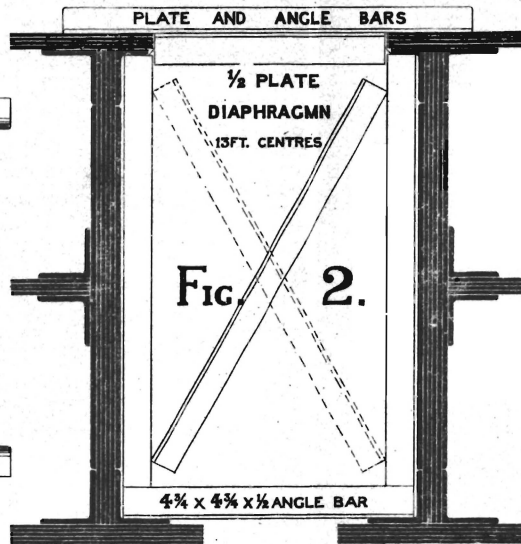
MAIN COMPRESSION MEMBERS OF THREE NOTABLE BRIDGES

QUEBEC BRIDGE



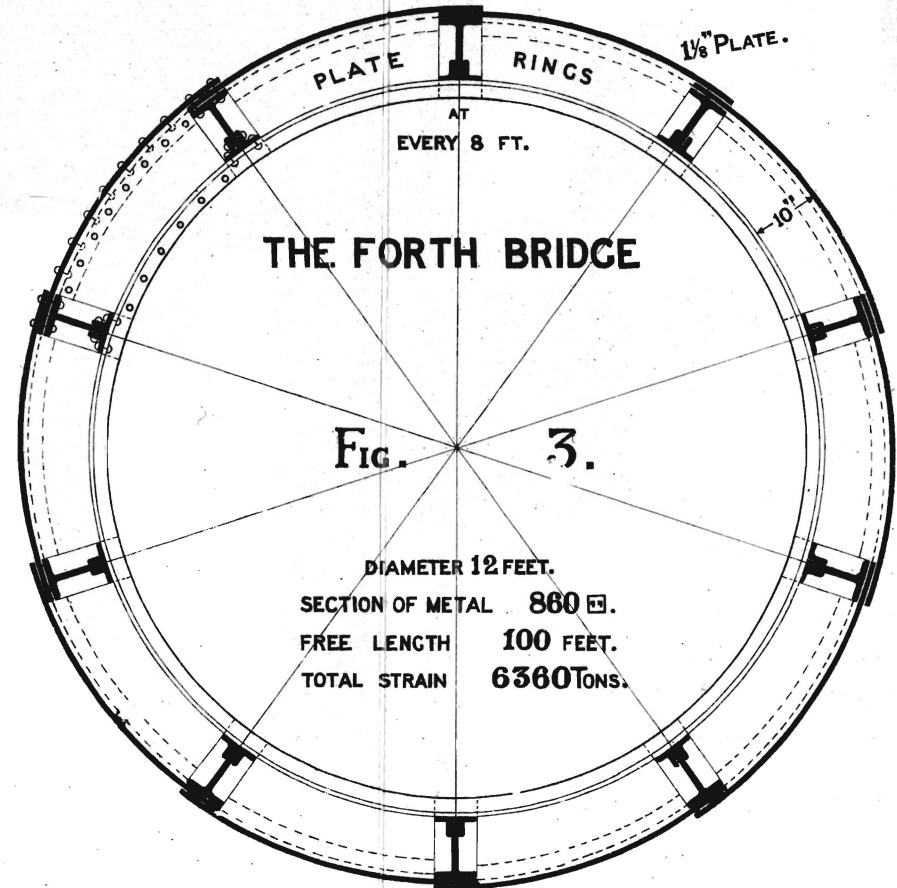
SECTIONAL AREA OF METAL 785 sq. in.
 OVERALL SECTION 5.7' x 4.8'.
 FREE LENGTH OF MEMBER 57 ft.
 INTENDED STRAIN 7350 TONS.
 FAILED UNDER 5650 TONS.

THE ACCEPTED DESIGN FOR NORTH SYDNEY BRIDGE



SECTIONAL AREA OF METAL 1100 sq. in.
 OVERALL SECTION 7.1' x 7.1'.
 FREE LENGTH OF MEMBER 40 ft.
 INTENDED STRAIN 7780 TONS.
 MAXIMUM STRAIN WITH WIND PRESSURE 9000 TONS.

THE FORTH BRIDGE



SCALE 3/8 ins. = 1 foot.

