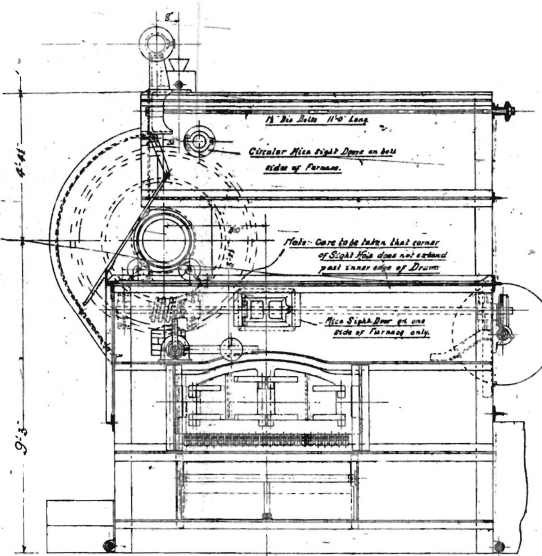
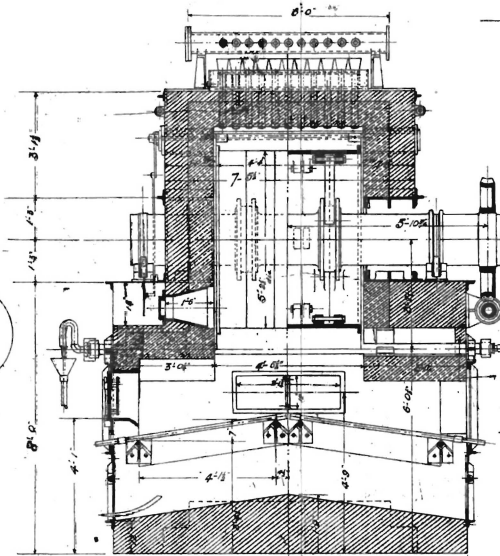


FIG. 4. — Sectional Elevation on Centre Line.



— Side Elevation — 5.



— Half Section thro' 'B-B' — Half Section thro' 'A-A' — 6.

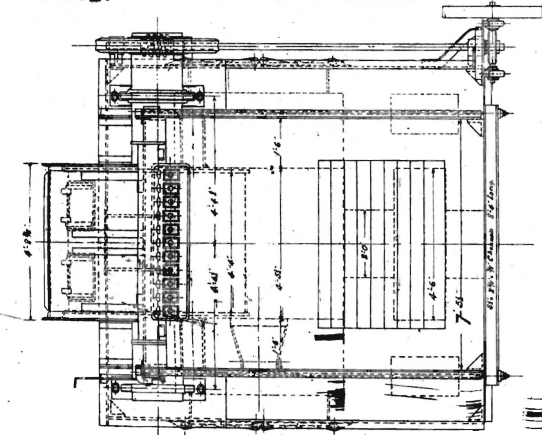
The Material being sent from Sydney includes: —
 All Metal Work required for construction of Furnace, Boilers, and Boilers, and also the necessary for the Boiler and Furnace outside of their own frame for taking classes and work.

The Material to be used in from Kingscross Plant consists: —
 7'-6\"/>

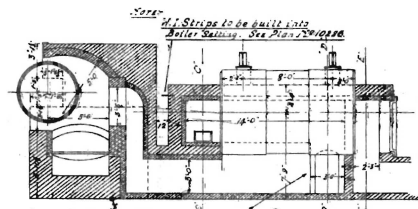
Note: Holes to be drilled up at water ends with long bits and also Holes to be drilled in position.

The Material required for this installation to be obtained at Mill or requisitioned for use at —

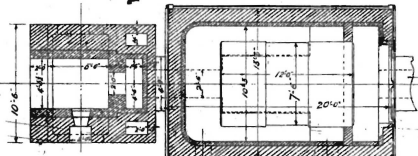
Common Bricks with Mortar, 1/2\"/>



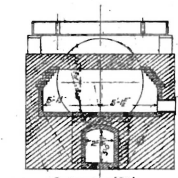
7.



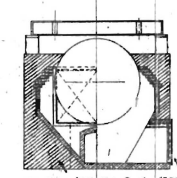
8.



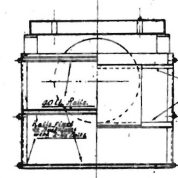
9.



10.

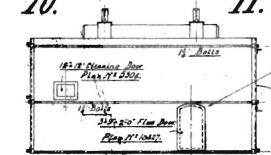


11.



12.

Note: Section shown for reference only. It is not to be used for construction.



13.

AMENDED ARRANGEMENT

OF MOLASSES FURNACE AND 7'-6\"/>

SCALE 3/4\"/>