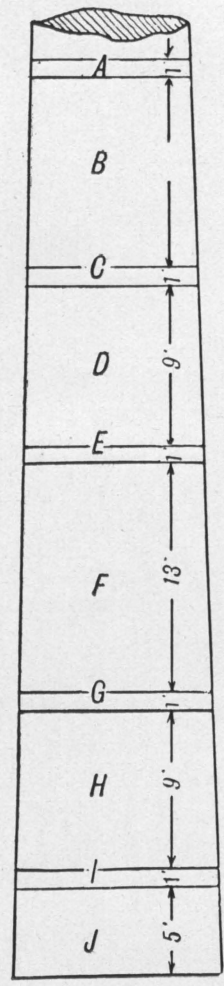


Local Name.	Index No.	Diagram.	No. of Rings in Diameter.	Date when Felled.	Date when Sawn.	Height of Tree in feet.	Diameter of Tree in inches.	Average.		Locality whence obtained.	Formation and kind of Soil.
								Height of Trees in locality.	Diameter of Trees in locality.		

**NORTH COAST TIMBERS.**



Blackbutt	.. 1		133	1907	1907	86	42	100	36	Lansdonne Mountains	..	Rough stony ridges, chocolate soil.
Tallow-wood	.. 2		102	1906	1907	86	42	100	40	"	"	"
Grey Gum	.. 3		99	20 Nov., 1907	23	86	42	100	40	"	"	"
Grey Ironbark	.. 4		98	26 April, 1907	29 April, 1907	58	40	50	32	Parish Bellengen, County Raleigh.	..	"
Red "	.. 5		..	9	11	76	40	70	28	Parish Burranan, County Macquarie.	..	"
Blue Gum	.. 6		108	14 Feb., 1907	5 April, 1907	74	50	60	32	Parish Burranan, County Macquarie.	..	Flat dry scrub, chocolate soil.
Brush Box	.. 7		127	22 Mar., 1907	23 Mar., 1907	64	32	80	23	Lansdonne Mountains	..	Rough stony brush, chocolate soil.
Turpentine	.. 8		103	9 April, 1907	11 April, 1907	80	42	60	20	Parish Burranan, County Macquarie.	..	Rough stony ridges, chocolate soil.
Red Mahogany	.. 9		97	19	22	52	40	45	32	Parish Valley, County Raleigh.	..	"
White "	.. 10		102	6	30	50	42	45	30	Parish Bellengen, County Raleigh.	..	"
Colonial Teak	.. 11		107	20 Aug., 1906	20 May, 1906	50	52	40	40	Parish Bex Hill, County Rous.	..	Thick brush, red chocolate soil.
<b>SOUTH COAST TIMBERS.</b>												
Grey Box	.. 12		102	1 Nov., 1907	15 Nov., 1907	56	42	40	32	Parish Wagonga, County Dampier.	..	Rough ridges, red chocolate soil.
Woollybutt	.. 13		101	14 Oct., 1907	4 Dec., 1907	40	43	40	30	Parish Wandandian, County St. Vincent.	..	River flat, red chocolate loam.
Spotted Gum	.. 14		95	14 Sept., 1907	5	56	48	50	32	"	..	Rough ridges
Turpentine	.. 15		101	26 Nov., 1907	6	60	46	50	28	"	..	"
Blackbutt	.. 16		100	15 Oct., 1907	7	60	43	50	36	"	..	"
Mountain Ash	.. 17		73	2 Nov., 1907	5 Nov., 1907	42	30	40	20	"	..	"
White Stringybark	18		98	18	23	56	42	45	20	"	..	"

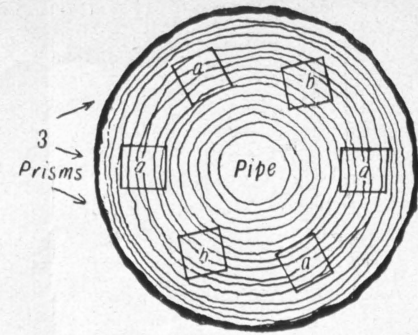


FIG. 1. Section showing method of selecting samples in regard to direction of annual rings, A. C. E. G. I.

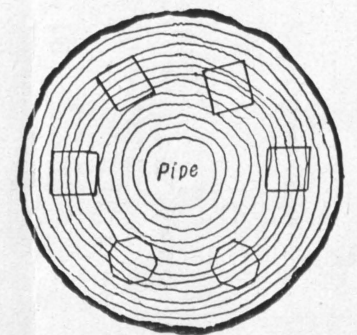


FIG. 2. Section showing method of selecting samples for column tests, D. H.

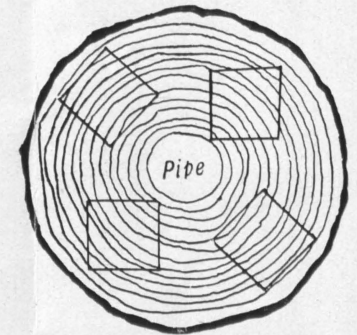


FIG. 3. Section showing method of selecting samples for beam tests F.

**NORTH COAST TIMBERS.**

**SOUTH COAST TIMBERS.**

1. A to J represent section in Blackbutt.
2. " " " Tallow-wood.
3. " " " Grey Gum.
4. " " " Grey Ironbark.
5. " " " Red Ironbark.
6. " " " Blue Gum.
7. " " " Brush Box.
8. " " " Turpentine.
9. " " " Red Mahogany.
10. " " " White Mahogany.
11. " " " Colonial Teak.

12. A to J represent sections in Grey Box.
13. " " " Woollybutt.
14. " " " Spotted Gum.
15. " " " Turpentine.
16. " " " Blackbutt.
17. " " " Mountain Ash.
18. " " " White Stringybark.

**DIAGRAM REFERENCE.**

Section A taken at the highest level of the trunk which would yield useful timber, 6 cubes, 4in. x 4in. x 4in., 3 prisms, 8in. x 4in. x 4in., to be accurately prepared. Fig. 1.  
 Section B not required for testing purposes.  
 Section C to be treated similarly to that of A, Fig. 1.  
 Section D to be cut up into the following sizes:—2 pieces,

8ft. x 4in. x 4in., 2 pieces, 8ft. x 4in. diameter, accurately prepared for testing as columns, 2 pieces, 8ft. x 4in. x 4in., roughly dressed for other tests. Fig. 2.  
 Section E to be treated similarly to that of A, Fig. 1.  
 Section F to be cut up into 4 beams each 12ft. long x 10in. x 10in., or in the case of small trunks as nearly 10in. x 10in. as possible. Fig. 3.

Section G to be treated similarly to that of A, Fig. 1.  
 Section H to be treated similarly to that of D, Fig. 2.  
 Section I to be treated similarly to that of A, Fig. 1.  
 Section J not required for testing purposes.