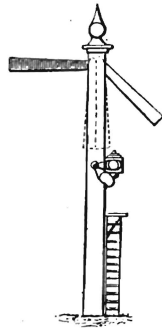




FIG. 5.



Semaphore signal

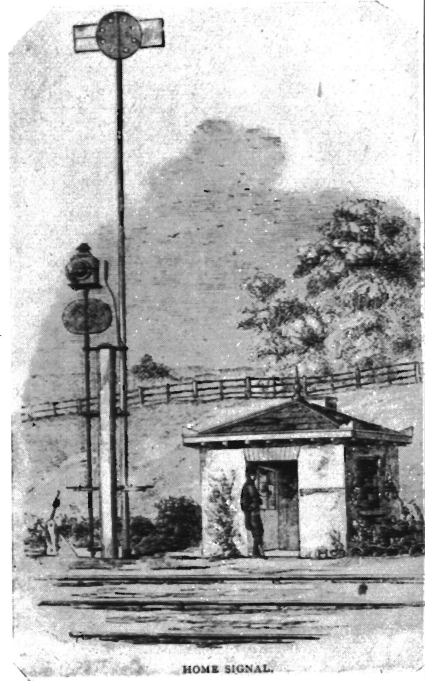


FIG. 6.

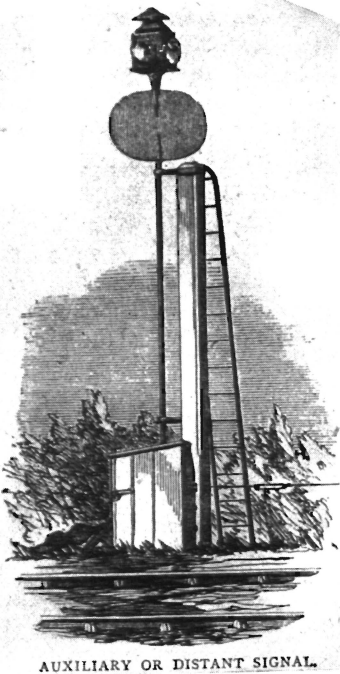


FIG. 7.

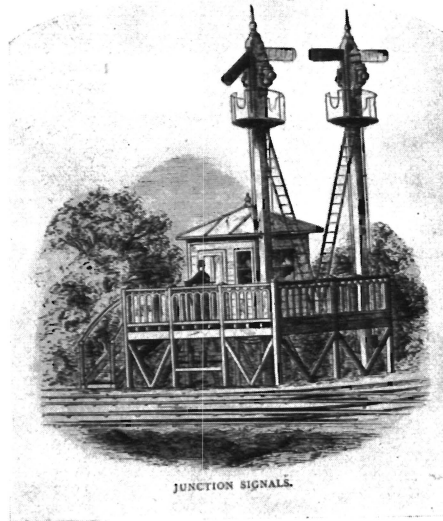
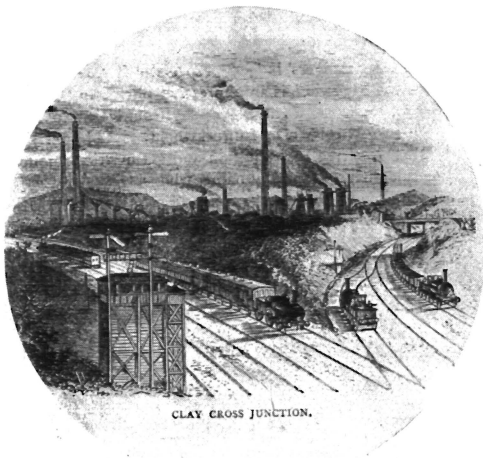


FIG. 8.



CLAY CROSS JUNCTION.

FIG. 9.

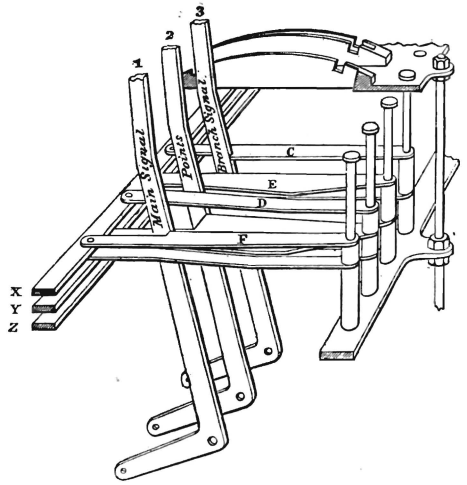
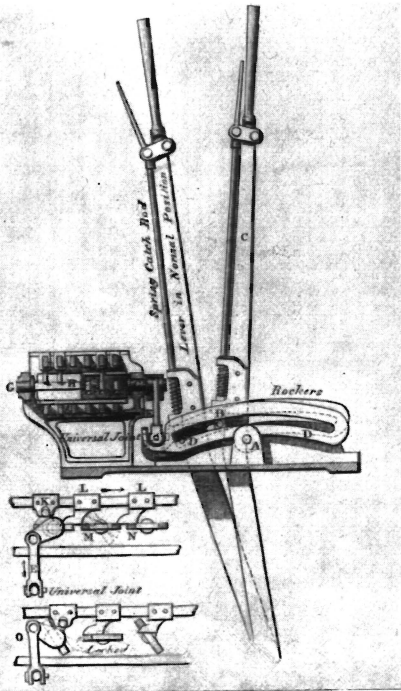
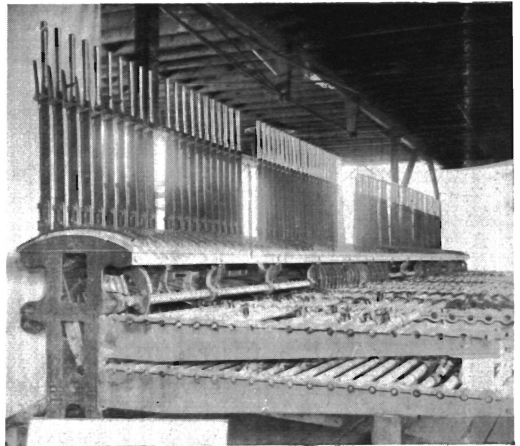


FIG. 10.



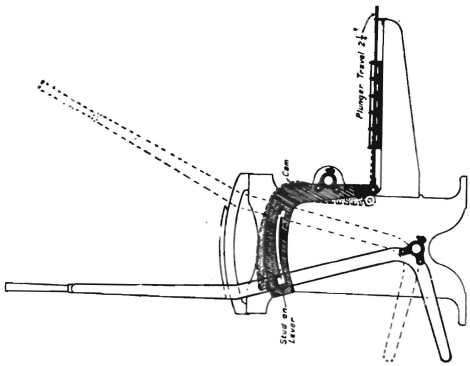
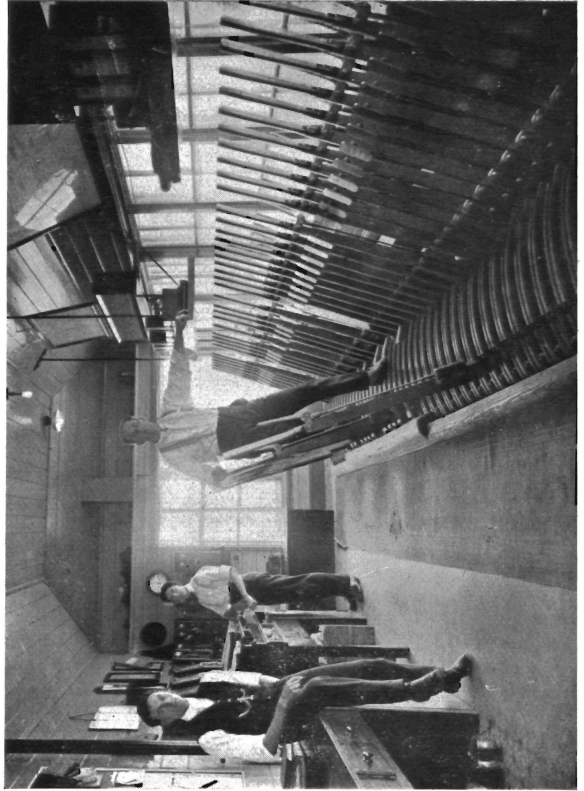
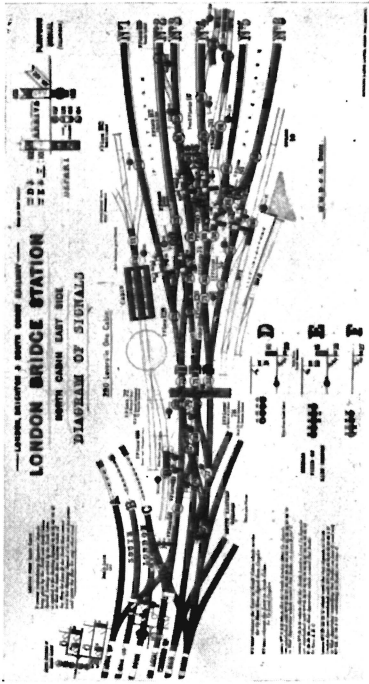
Saxby Type.

FIG. 11.



Mc. & H. Type.

FIG. 12.



-McKenzie and Elliott's Cam and Tappet Frame.

FIG. 13.

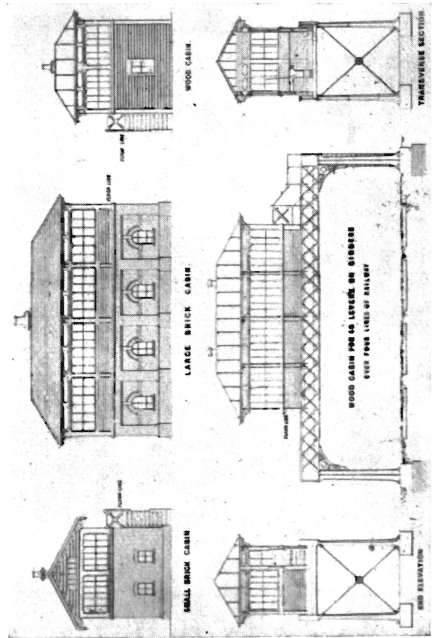


FIG. 15.

Shunting
Signal

Home or Starting
Distant Signals.

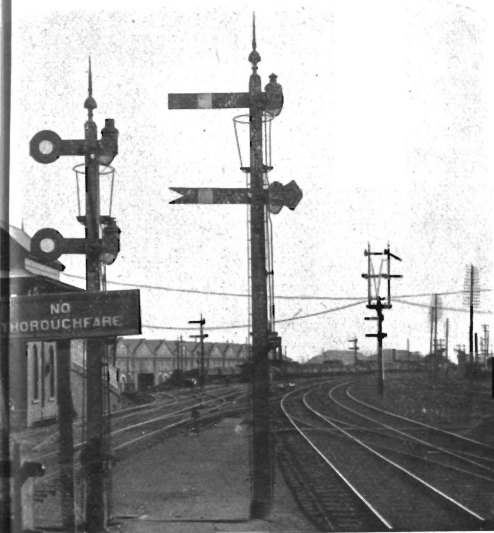


FIG. 17.

FIG. 17a.

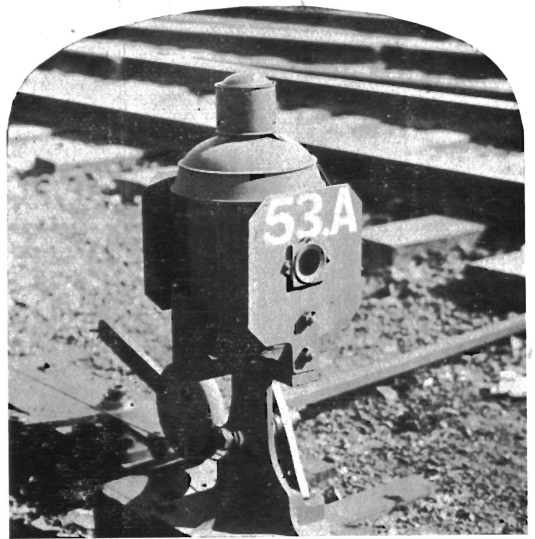


FIG. 18.

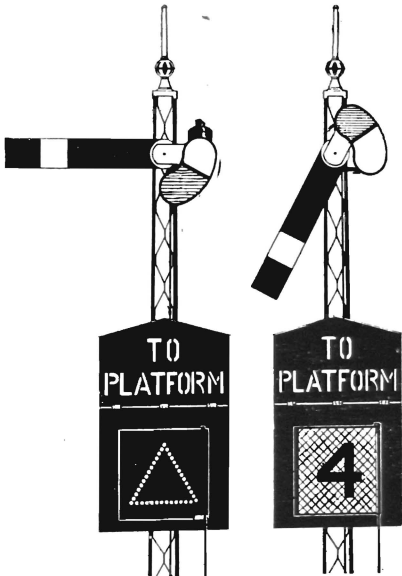


FIG. 19.

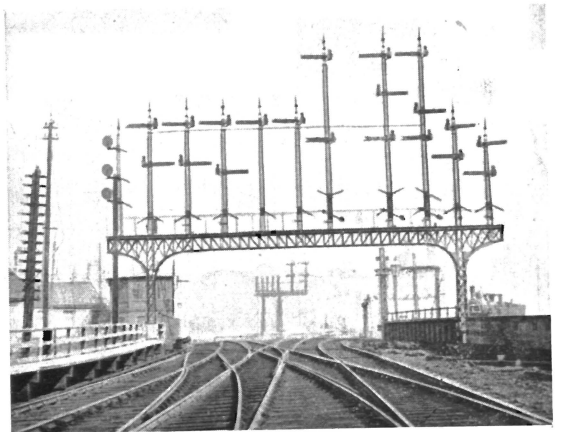


FIG. 20.

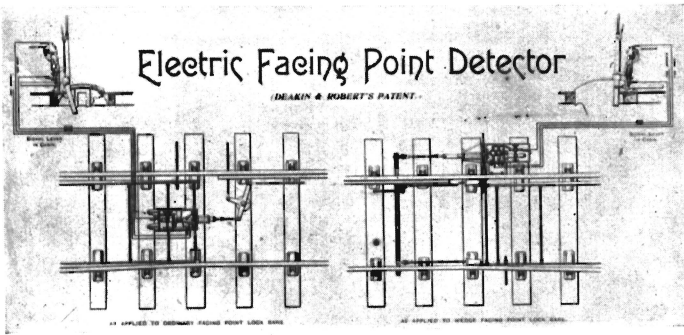


FIG. 25.



FIG. 26.

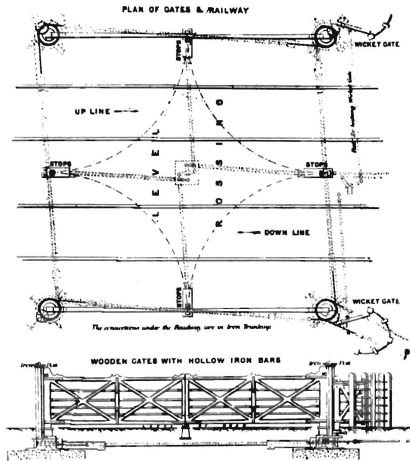
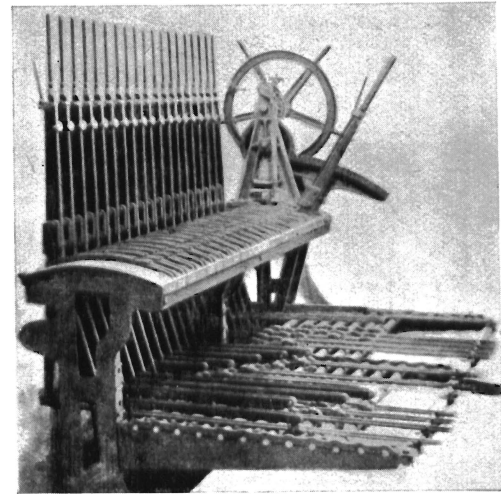


FIG. 27.



McK. and H. Interlocking Machine with Gate Operating Gear.
FIG. 28.

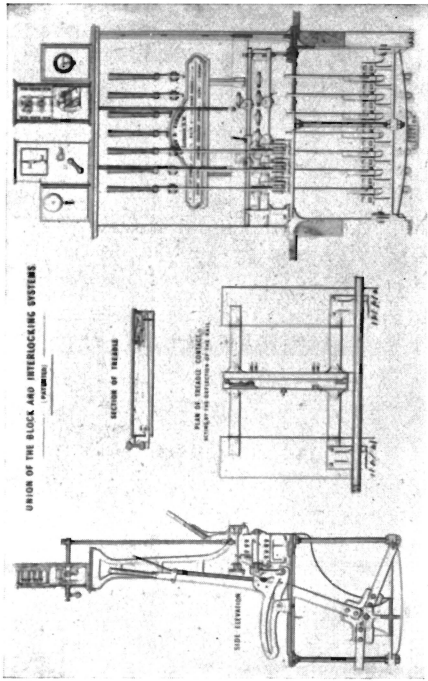


FIG. 30.

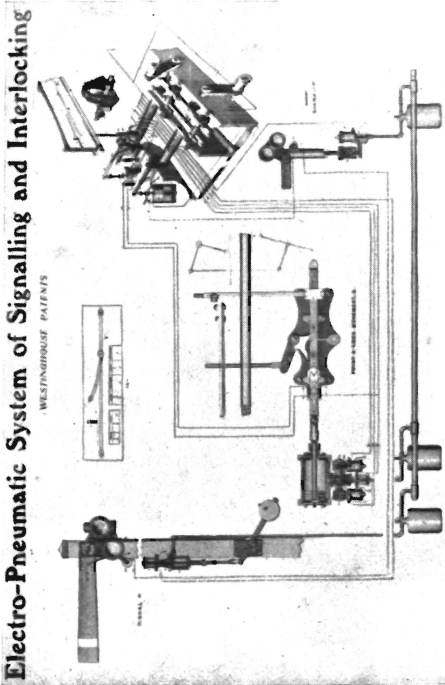
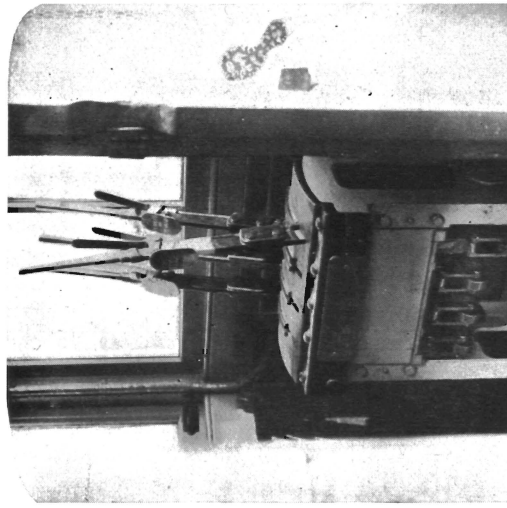


FIG. 29.



FIG. 31.



FIG. 33.

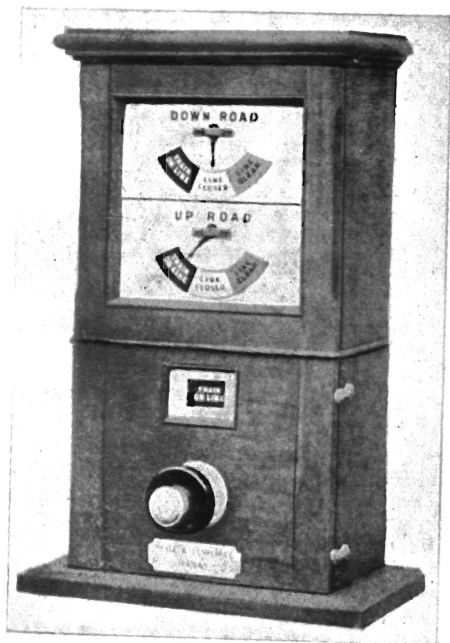


FIG. 34.



FIG. 35.

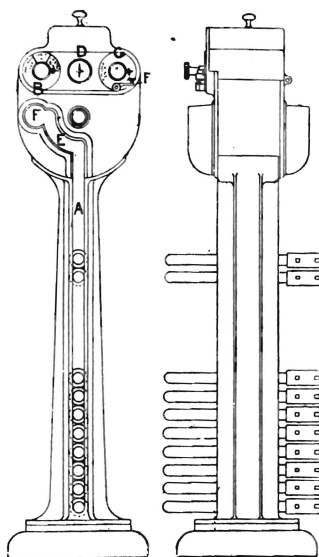


FIG. 36.

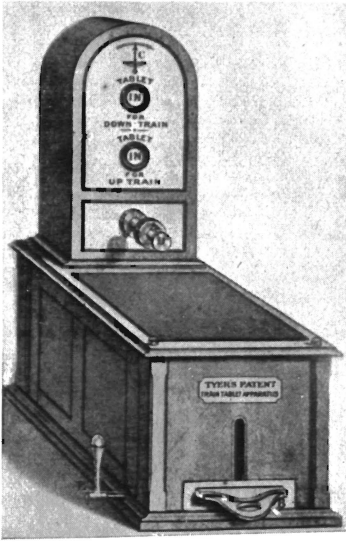


FIG. 37.

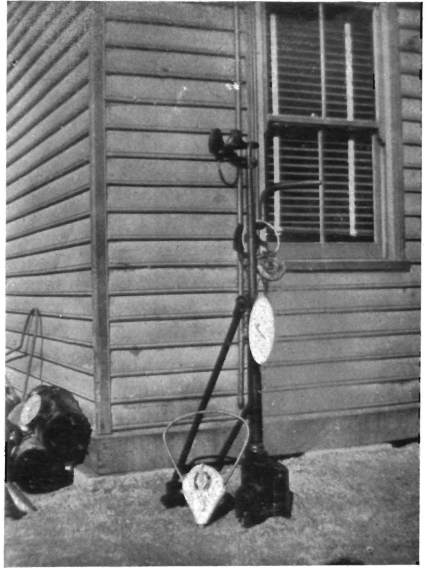


FIG. 38.

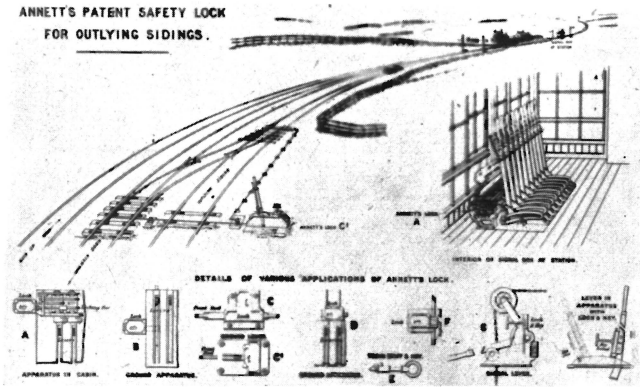


FIG. 39.

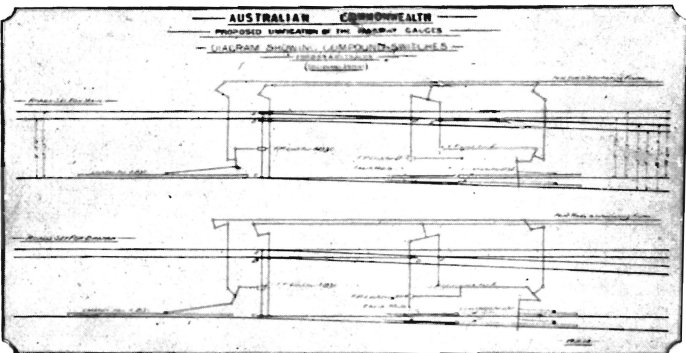


FIG. 40.